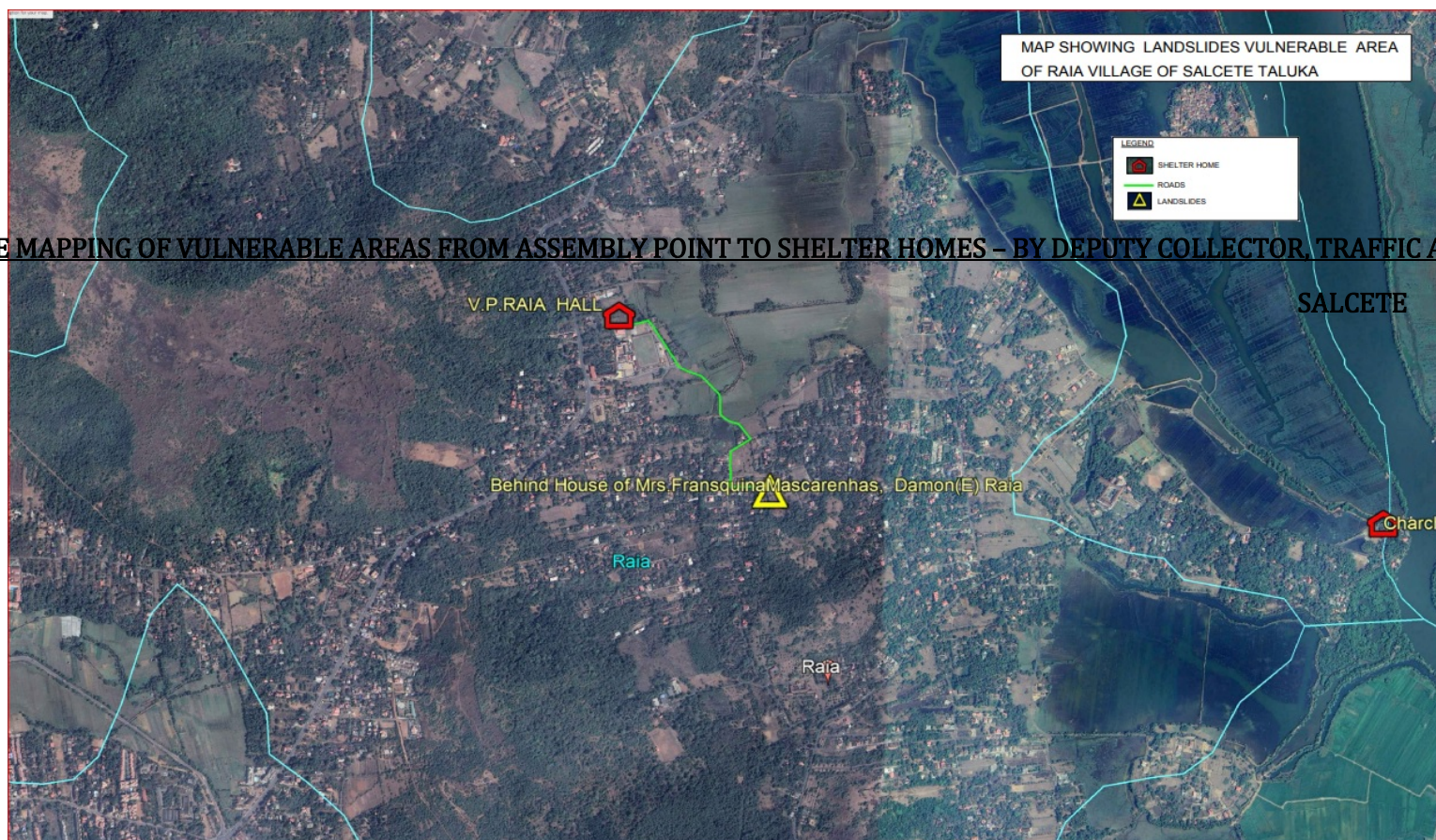


Taluka	VP vulnerable	Areas vulnerable	Households likely to be affected	Expected time	Intervention needed
		Lake Maimollem	affected		constructed
	Municipality Vasco	4) MercesVaddem&Maimollem	Approximately 04 houses affected	June to August	Retaining wall to be constructed
Mormugao	Municipality Mormugao	1) Bharatline&Desterro	Approximately 15 houses affected	June to August	Retaining wall to be constructed
	Municipality Mormugao	2) Bogda	Approximately 15 houses affected	June to August	Retaining wall to be constructed
	Municipality Mormugao	3) Rumdawada	Approximately 25 houses affected	June to August	Retaining wall to be constructed
	Municipality Mormugao	4) Jetty & Sada	Approximately 20 houses affected	June to August	Retaining wall to be constructed
	Municipality Mormugao	5) Harbour	Approximately 18 houses affected	June to August	Retaining wall to be constructed
PONDA					
	NIL	NIL	NIL	NIL	NIL
QUEPEM					
	NIL	NIL	NIL	NIL	NIL
SANGUEM					
	NIL	NIL	NIL	NIL	NIL
CANACONA					
	NIL	NIL	NIL	NIL	NIL
DHARBANDORA					

Taluka	VP vulnerable	Areas vulnerable	Households likely to be affected	Expected time	Intervention needed
	NIL	NIL	NIL	NIL	NIL



8. ROUTE MAPPING OF VULNERABLE AREAS FROM ASSEMBLY POINT TO SHELTER HOMES – BY DEPUTY COLLECTOR, TRAFFIC AND PWD ROADS.

Fig: 1 *Map showing landslide vulnerable area and shelter homes in Raia village of Salcete taluka.*

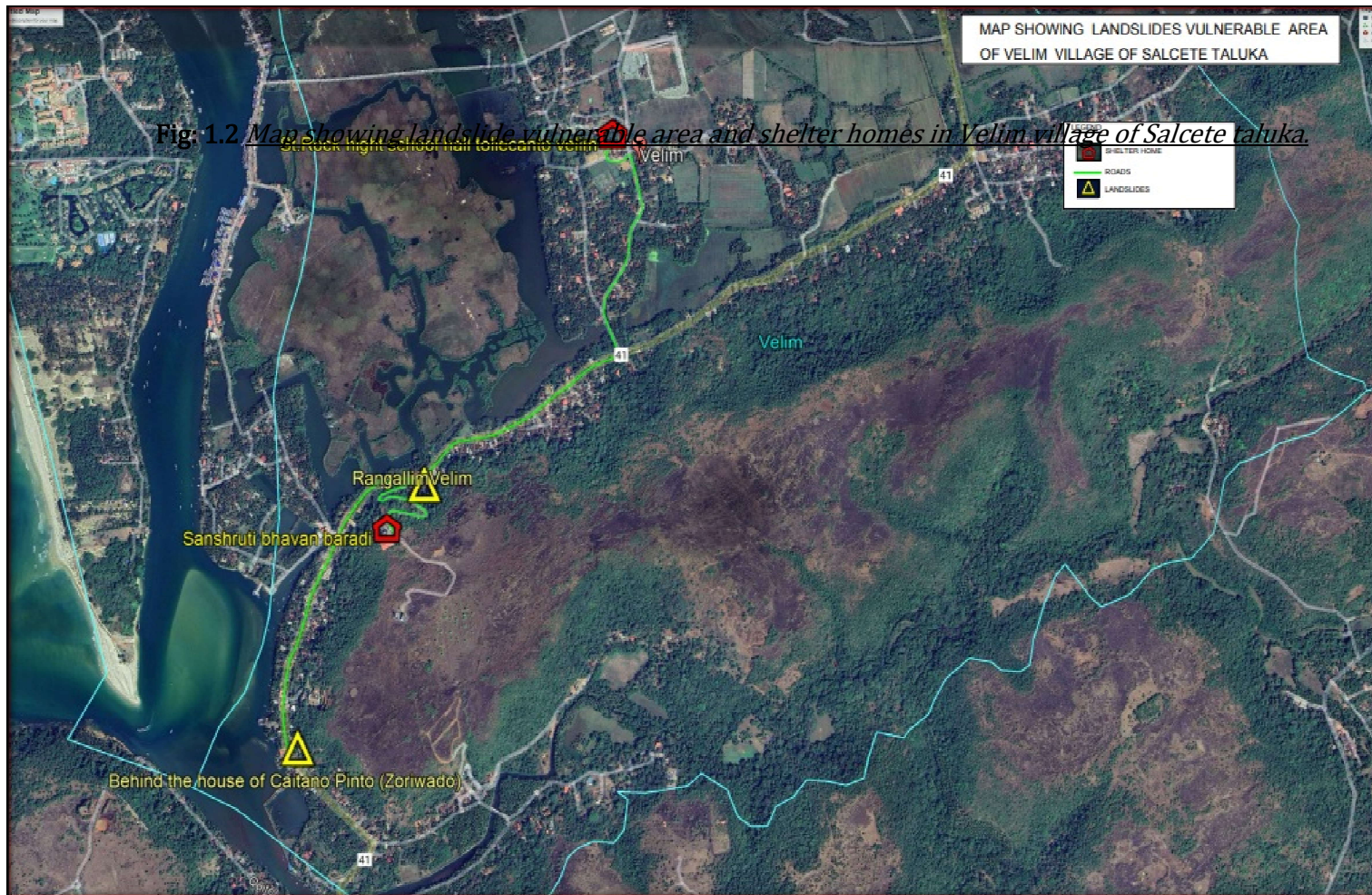


Fig: 1.2 Map showing landslide vulnerable area and shelter homes in Velim village of Salcete taluka.

MORMUGAO

